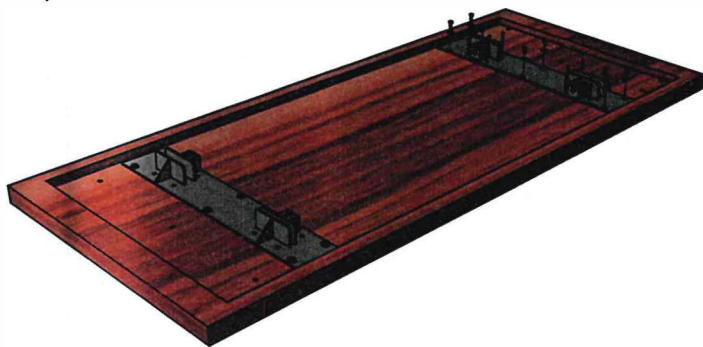


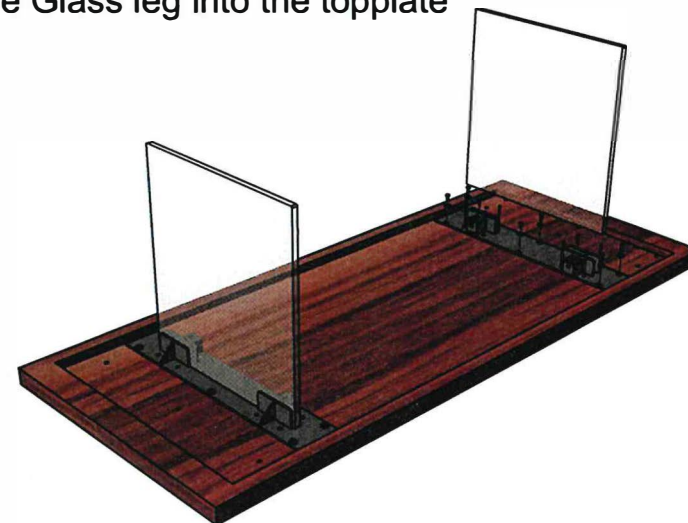
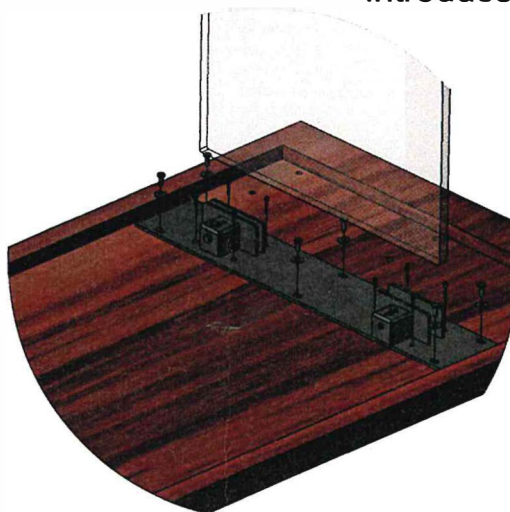
STEP_1

Introduce the screws into the tabletop with
12905-GLASS leg, Metal support to 100 cm Table
12 pcs. - Washer M8
12 pcs. - Hexagonal head screw M8x20
16 pcs. - Wooden screw Ø4.0x25



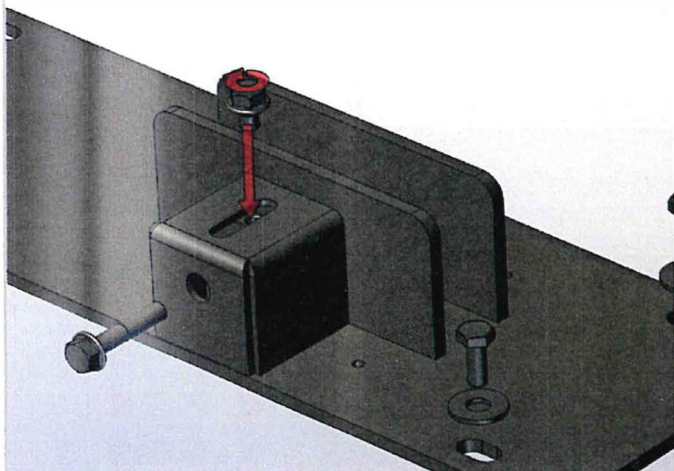
STEP_2

Introduce the Glass leg into the topplate



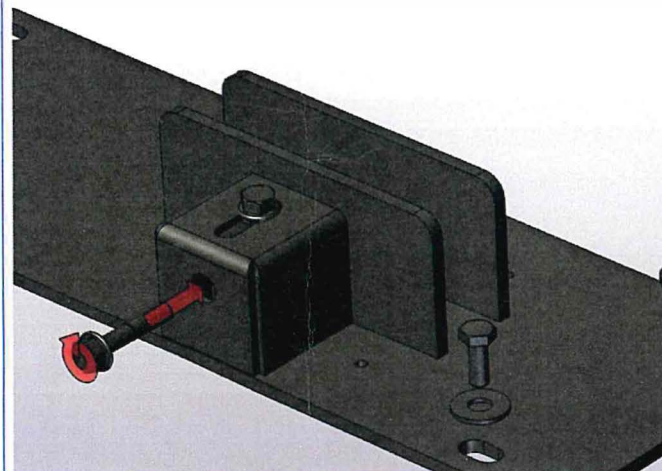
STEP_3

Tighten the hexagon flange bolts M8x20
up to 90%, because you need to pull the
plate to the glass uniformly in STEP_3



STEP_4

Tighten the Hexagon flange bolts M8x40
up to 100%. Pay attention not to break
the glass.



STEP_5

Tighten the hexagon flange bolts M8x20
up to 100% to finalize the fixing of the
glass leg.

